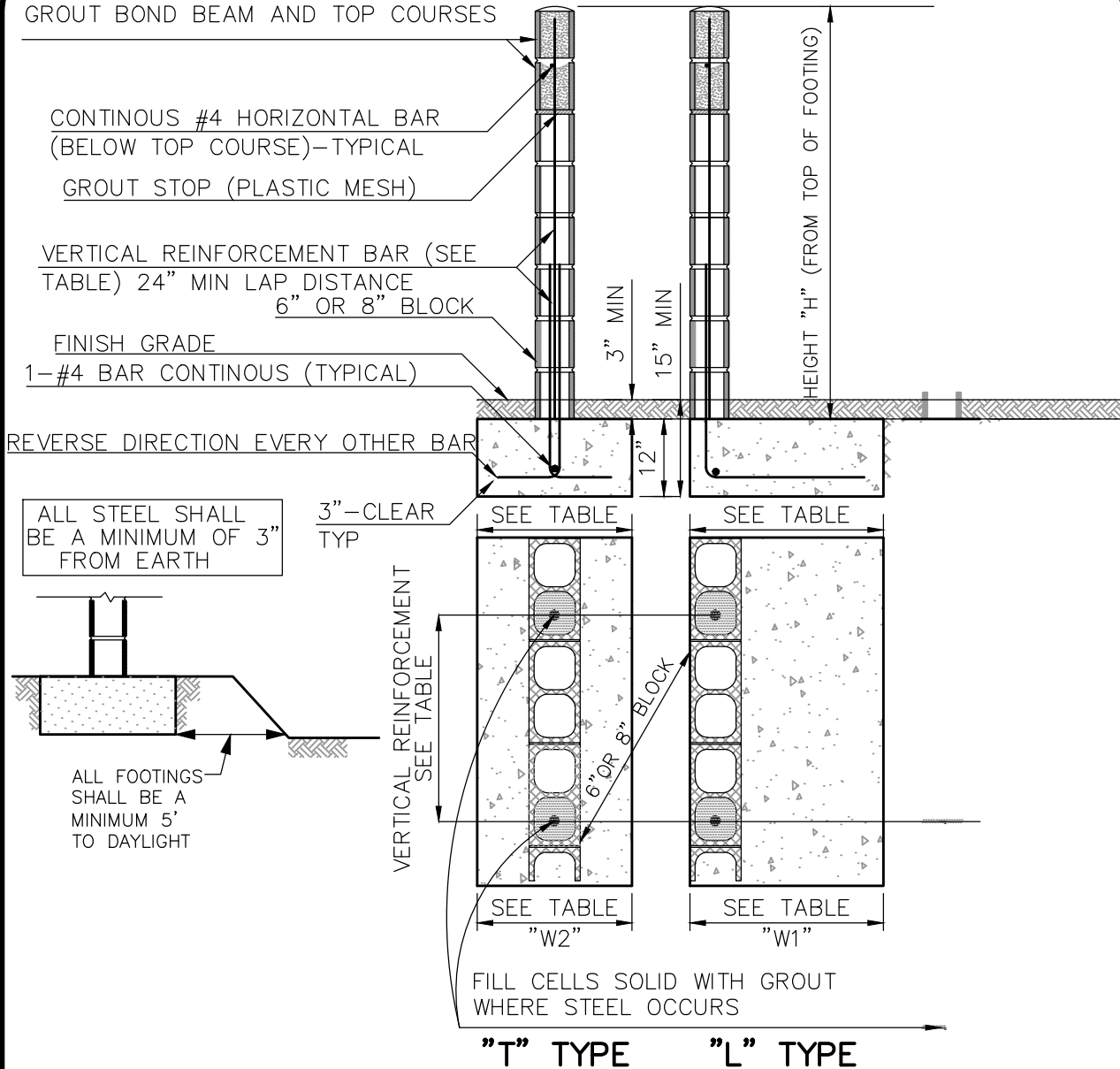


USE BOND BEAM BLOCK BELOW TOP COURSE.  
 GROUT BOND BEAM AND TOP COURSES



DIMENSION AND REINFORCEMENT TABLE

"H"	REINFORCEMENT BARS		"L" TYPE	"T" TYPE
	VERTICAL	HORIZONTAL	"W1"	"W2"
3'	#4 @ 48"	AS SHOWN ABOVE AND ON SHEET 3	16"	22"
4'	#4 @ 32"		20"	22"
5'	#4 @ 32"		24"	22"
6'	#4 @ 32"		30"	24"
7'	#5 @ 32"		36"	28"
8'	#5 @ 32"		42"	30"

 City of  
 Garden Grove  
 California

## MINIMUM REQUIREMENTS FOR 6" OR 8" BLOCK WALL

Approved:  Date: 12-8-15  
 City Engineer R.C.E. 52125 Exp. 12-31-16

REVISIONS	BY	DATE

STD. PLAN NUMBER  
**B-505**  
 SHEET 1 OF 3



**MATERIAL SPECIFICATIONS:**

1. CONCRETE BLOCK: ASTM C-90
2. REINFORCING STEEL: ASTM 615, GRADE 40
3. ACCEPTABLE SOIL TYPES:
  - a. MIN. ALLOWABLE BEARING: 1000 LBS./SQ. FT
  - b. MIN. LATERAL BEARING: 100 LBS./SQ. FT./FT
  - c. MAX. EXPANSION INDEX: 20
4. CONCRETE: 2500 LBS./SQ. IN. COMPRESSIVE STRENGTH IN 28 DAYS.
5. MORTAR: 1:1/4:3 (PORTLAND CEMENT: HYDRATED LIME OR LIME PUTTY: SAND, BY VOLUME), MIXED TO PLASTIC CONSISTENCY. MORTAR SHALL CONFORM TO ASTM C270 AND ARTICLES 2.1 AND 2.6A OF TMS 602/ACI 530.1/ASCE 6.
6. GROUT: 1:1/10:3 (PORTLAND CEMENT: HYDRATED LIME OR LIME PUTTY: SAND BY VOLUME), MIX TO FLOW WITHOUT SEGREGATION. GROUT MAY CONTAIN 2 PARTS PEA GRAVEL (3/8" MAX. SIZE). MINIMUM COMPRESSIVE STRENGTH: 2500 LBS./SQ. IN. GROUT SHALL COMPLY WITH ARTICLE 2.2 OF TMS 602/ACI 530.1/ASCE 6.

**GENERAL NOTES:**

1. THIS DESIGN IS FOR AVERAGE CONDITIONS AND MAY NOT BE SUITABLE FOR ALL CASES. IT IS RECOMMENDED THAT A LICENSED CIVIL OR STRUCTURAL ENGINEER BE CONSULTED.
2. CONCRETE MASONRY UNITS SHALL BE LAID IN RUNNING BOND. (BLOCKS ARE STAGGERED).
3. ALL VERTICAL CELLS CONTAINING REINFORCING STEEL SHALL BE GROUTED.
4. APPROVED GROUT STOPS ARE REQUIRED BELOW HORIZONTAL STEEL IN PARTIALLY GROUTED WALLS. BAGS, NEWSPAPERS, ETC. ARE NOT APPROVED GROUT STOPS.
5. INITIAL BED JOINT SHALL BE 1/4" MIN., 1" MAX. SUBSEQUENT BED JOINTS SHALL BE 1/4" MIN., 5/8" MAX.
6. VERTICAL CONTINUITY OF CELLS SHALL BE UNOBSTRUCTED. MORTAR PROJECTIONS SHALL NOT EXCEED 1/2" FOR 6" AND LARGER BLOCK. MORTAR DROPPINGS OR OTHER FOREIGN MATTER ARE NOT PERMITTED IN CELLS AND MUST BE REMOVED.
7. VERTICAL EXPANSION JOINTS REQUIRED AT 60'-0" MAX. INTERVALS.
8. REQUIRED BAR LAPS: 24" MINIMUM
  - a. VERTICAL STEEL: 30 BAR DIAMETERS.
  - b. HORIZONTAL STEEL: 40 BAR DIAMETERS.
  - c. WIRE JOINT REINFORCEMENT IN THE MORTARED BED JOINT: 75 WIRE DIAMETERS OR IN ALTERNATE BED JOINTS OF RUNNING BOND, 54 DIAMETERS PLUS TWICE THE BED JOINT SPACING.
9. WHERE HORIZONTAL WIRE JOINT REINFORCEMENT IS REQUIRED OR UTILIZED, IT SHALL BE EQUIVALENT TO TWO 3/16" DIAMETER BARS CONNECTED AT 16" INTERVALS BY NO. 9 GAUGE WELDED WIRE.
10. 3" MIN. COVER REQUIRED FOR REINFORCEMENT IN CONCRETE WHICH IS CAST AGAINST EARTH. NO BACKFILL TO BE PLACED AGAINST RETAINING WALL FOR A MINIMUM OF 7 DAYS.
11. METHOD OF COMPACTION WITHIN 4ft. OF RETAINING WALL TO BE APPROVED BY BUILDING INSPECTOR
12. PRIOR TO START OF WORK. FOR 6" SLUMPSTONE, PROVIDE CLEANOUTS AT THE BASE OF ALL CELLS CONTAINING VERTICAL REINFORCEMENT.
13. FIRST COURSE MAY BE BURIED TO HIDE CLEANOUTS.

**INSPECTION PROCEDURES:** INSPECTION REQUESTS SHALL BE MADE BEFORE 4:00 PM ON THE BUSINESS DAY PRIOR TO THE DESIRED INSPECTION DATE.

1. FOUNDATION: AFTER TRENCHES ARE DUG, STEEL IS TIED IN PLACE, AND BEFORE ANY CONCRETE IS POURED.
2. PREGROUT: AFTER ALL BLOCKS (EXCEPT CAP) ARE IN PLACE, VERTICAL AND HORIZONTAL STEEL IS IN PLACE, GROUT STOPS (FOR PARTIALLY GROUTED MASONRY) ARE IN PLACE, AND PRIOR TO GROUTING. INSPECTION OF RETAINING PORTION TO BE DONE SEPARATELY.
3. FINAL: AFTER GROUT IS IN PLACE AND PRIOR TO PLACEMENT OF CAP.



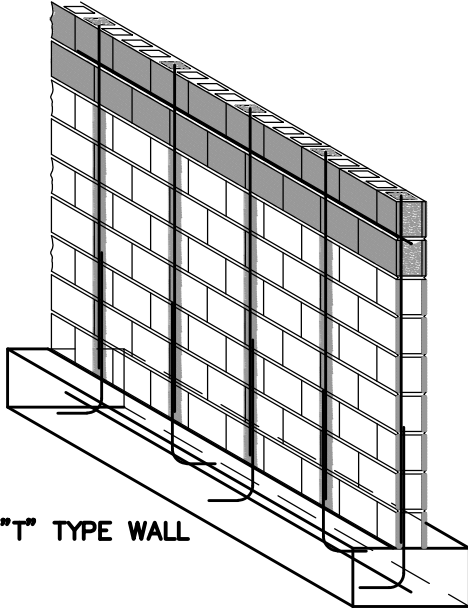
City of  
Garden Grove  
California

**MINIMUM REQUIREMENTS  
FOR 6" OR 8" BLOCK WALL**

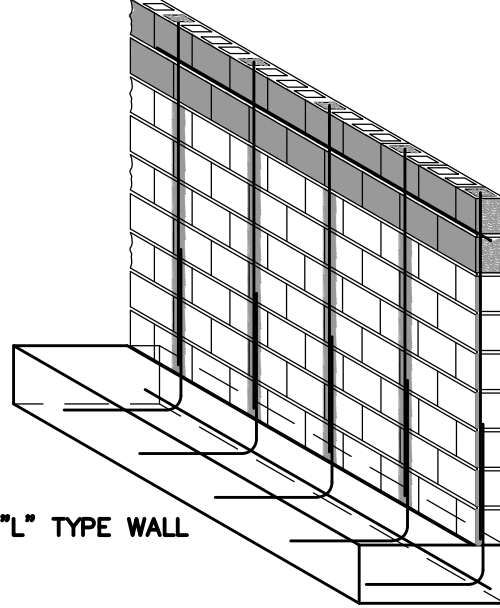
Approved  Date 12-8-15  
 City Engineer R.C.E. 52125 Exp.12-31-16

REVISIONS	BY	DATE

STD. PLAN NUMBER  
**B-505**  
SHEET 2 OF 3



"T" TYPE WALL



"L" TYPE WALL

NOTE:

THIS DETAIL IS PROVIDED AS A COURTESY TO ASSIST IN THE CONSTRUCTION OF A TYPICAL PRIVACY WALL ON PRIVATE PROPERTY AND MAY NOT BE SUITABLE FOR ALL CONDITIONS. PERMIT APPLICANTS WISHING TO USE THIS DETAIL SHOULD CONSULT WITH A PROPERLY LICENSED DESIGN PROFESSIONAL FOR SUITABILITY OF DESIGN PRIOR TO THE START OF CONSTRUCTION. SECTIONS OF WALLS MUST BE SHOWN ON PLANS. PLANNING DIVISION SHALL APPROVE STYLE AND COLOR OF BLOCK FOR ALL COMMERCIAL AND MULTI-FAMILY RESIDENTIAL DEVELOPMENTS PRIOR TO CONSTRUCTION.



City of  
Garden Grove  
California

## MINIMUM REQUIREMENTS FOR 6" OR 8" BLOCK WALL

Approved:  Date: 12-8-15  
 City Engineer R.C.E. 52125 Exp. 12-31-16

REVISIONS	BY	DATE

STD. PLAN NUMBER  
**B-505**  
 SHEET 3 OF 3